

Arohena School & Community

Where we strive to provide
excellence in all aspects of education



Reporting for Duty!

40 Pukewhau Road
RD7, Te Awamutu, 3877
Phone: 07 872 4526
Email: admin@arohena.school.nz
Facebook: Arohena School
Website: www.arohena.school.nz
Mobile: 027(Arohena)2764362

Notice Board

Targa Rally

Friday 17th May

Looking for volunteers to help.

Please contact the school if you are available.

Wednesday 20th March 2019

Newsletter

"Our school exists to offer excellence in all aspects of education"



Kia ora everyone

I am sure that we all woke up this morning trying to comprehend the events in Christchurch over the weekend. There have been many times I have been brought to tears when considering the tragedy that unfolded on Friday.

When tragedies like this happen, some of our children will inevitably be asking questions.

Nathan Wallis from The Brainwave Trust has suggested some guidelines about how to deal with situations like this.

1. Turn off TV and media - it will reinforce the trauma.
2. Show you are concerned, like them, but feel safe now. If you feel safe, they are likely to feel the same way as well.
3. Express confidence in how quickly the police responded and their ability to protect us.
4. Be especially aware of how your "tween" is responding. Eleven is a very vulnerable age for loss and grief.
5. Give them a sense of agency by telling them that people are wearing red to show their support of Muslim people and Christchurch people in general. The red stands for a united Canterbury and also signals love. A simple gesture like this can move them into action mode and help to relieve the victimisation feelings linked to trauma.
6. Pamper them, cuddle them, support them.

There is also advice from the Parenting Place (<https://goo.gl/AiHWT1>) that might be useful. Ultimately, it is up to individual families to decide how they deal with this, but I hope that these

resources might help.

This week in learning:

Our senior students have spent the past week in Whitianga at school camp. The students enjoyed snorkeling, kayaking, fishing and bush walks.

Our teachers, parent group and instructors on this trip provided opportunities for students to grow personally, increase their self-confidence, develop a sense of adventure, and enhance their responsibility for their own and others' safety.

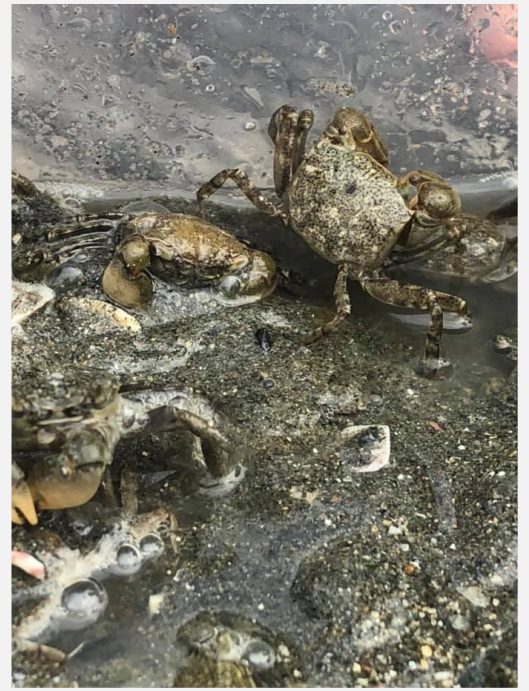
It was a good reminder to us that real-world learning brings the benefits of formal and informal education together and reinforces what good educationalists have always known: that the most meaningful learning occurs through acquiring knowledge and skills through real-life, practical or hands-on activities. Education outside the classroom can also address educational inequality, re-motivating children who do not thrive in the traditional classroom environment, such as those from disadvantaged backgrounds or with special educational needs. Young people who experience learning outside the classroom as a regular part of their school life benefit from increased self-esteem, and become more engaged in their education both inside and outside the classroom walls.

We look forward to more adventures in the future with Wharepapa South School and our learners here at Arohena School.

Lisa Bates
Principal

Whitianga Senior Camp - Monday 11th to Friday 15th March.

A little snippet of the fun our Seniors had while on camp.



Please support our Sponsors

Rural Contractors Ltd

Farm Development Services

101 Arapuni Road RD5,
Te Awamutu

Ph 07 870 6610

Email: ruralcon@xtra.co.nz

*Earthmoving *Bulldozers *Excavators *Graders *Rollers
*Trucks *General Cartage *Site works *Trucks & Trailers

GROUNDSPREADING We've got it covered...

• SPECIALISED • LOCAL • EXPERIENCED

"the knowledge, the know how, the smile"



WEALLEANS
Groundspread



Robert Hayward, General Manager,
Wealleans Groundspread
Phone 07 872 4701



THE HONDA SHOP

Te Awamutu



462 Ohaupo Road
Ph (07) 871 7317

Shane 021 740 890

shane@thehondashop.co.nz



C-DAX

www.thehondashop.co.nz



**EDWARDS ENGINEERING
SERVICES LTD**

+ Cow Shed Repairs and Maintenance + Machining
+ Onsite Repairs and Maintenance + CNC Profile Cutting
+ General Engineering + CNC Pressing/ Folding
+ Structural Engineering

www.edwardsengineering.co.nz | 078716560 | 0273291397

MAC'S MEATS

1403 Alexandra Street,
Te Awamutu

07 871 6611 / 021 279 2201

Richard +



Donna

HOME KILLS

HOOF-IT
No. 1 For
Professional Hoof Care
Proudly Supporting
Arohena School
and Community
M 021 278 8278
W www.hoofit.co.nz

Comins Contracting Ltd

MUCK SPREADER & AERATOR

MOWING / RAKING

SILAGE / HAY -

BIG SQUARE BALER / 2 COMBI BALER'S

2 LOADER WAGON'S / STACKING

ALL CULTIVATION WORK

DRILLING CROPS / GRASS SEED

ALL DIGGER WORK

METAL CARTAGE / GENERAL

Phone 872 2865 / Mobile 0274 768 215



Darcy Finch

Managing Director Phone: 07 871 3218 / Cell: 027 594 9521

Email: darcy@finchcontracting.nz

King Country Drilling Contractors

For all your Drilling Requirements

30 years of drilling in the king country / Central Plateau

*Offal *soak * Foundations * Rubbish * Lined Soak Holes * Surface Wells

- Concrete Products Available -

IF IT'S A HOLE WE'LL DRILL IT

0508 HOLES DUG
465 373

Steve Colson
Owner Operator / 4WD Unit

paperplus

TOYWORLD
where the best toys come from



55 ARAWATA ST
TEAWAMUTU

Supporting our community

Fieten Motor Services
A* GRADE SERVICE

PHONE. 07 872 2560
WHAREPAPA SOUTH

WHAREPAPA SOUTH, R.D.7, TE AWAMUTU
RES: (07) 872 2550 / PHONE: (07) 872 2560
MOBILE PHONE: 025 724 664 EMAIL: Fieten.motors@xtra.co.nz